



Q 1/2 2020
Newsletter

MINEHERITAGE



Last update: 29.06.2020

WP1: Halfway

This 3rd newsletter symbolizes a landmark in the MineHeritage Project, sponsored by EIT and EIT Raw Materials Academy. In these trying times that Europe is going through, MineHeritage partners doubled their efforts to successfully reach halfway through the project timeline. An outstanding European spirit made possible the multiple goals proposed by the consortium to be achieved.

During this #StayAtHome period, discovery adventures are already available at the project website <https://mineheritage-project.eu> and social networks, where 13 freely available booklets on selected Historical Mining Sites and one video regarding the 3D mapping of the Tibães Mine in Portugal can be explored. By the end of 2020, the MineHeritage Consortium will have produced an additional 13 new booklets and also 13 dissemination videos that will be freely available on our platforms.

The participation on several dissemination activities has helped the creation of new synergies with local stakeholders and has been a key factor in the dissemination of the importance of Raw Materials in the technological and social development of European communities throughout history.

We invite you to discover MineHeritage's third Newsletter and distribute it among your contacts. You can also join us through our website and social networks for more information and for a more interactive experience with the MineHeritage concept!

Consortium:



UNIVERSITÀ
DEGLI STUDI
DI PADOVA



Consiglio Nazionale
delle Ricerche



TAL
TECH



This activity has received funding from the European Institute of Innovation and Technology (EIT), a body of the European Union, under the Horizon 2020, the EU Framework Programme for Research and Innovation



WP1: Project review H1/2020/Central CLC, 15th May 2020

The Project Coordinator was called upon by the Central CLC for the H1 Project Review on the 15th May 2020. MineHeritage was evaluated on the achievements for the first one-and-a-half-year duration of the project with special emphasis on COVID-19 impact and mitigation actions. We thank a very positive review and all evaluator's comments on the consortium good work! Due to the partners commitment, the **"Project is over delivering"**!

WP1: Midterm Meeting, 3rd June 2020

Due to travel limitations imposed by the current pandemic, the consortium adapted to this new reality and organized the Midterm Meeting using the Zoom platform. The original meeting was to be prepared by the Université Grenoble Alpes (UGA), where a technical visit was programmed to the historical mining site "Le Grand Filon, Site Minier des Hurtières". We were misfortunate not to profit from the close in person networking environment that always creates new venture possibilities, missing also the nice setting provided by Grenoble, France. Even so, this MineHeritage event on the 3rd of June 2020 brought together 25 participants from the 13 partners, that allowed for a discussion of the present state and future actions to be taken in the scope of the MineHeritage project.



WP1: EIT Innovation Hub Central CLC Newsletter

The MineHeritage Project was invited to be included in the EIT Innovation Hub Central CLC Newsletter of April 2020. It was an honour for MineHeritage to be part of this Newsletter with a one-page article.

[Click here to view the Newsletter](#)

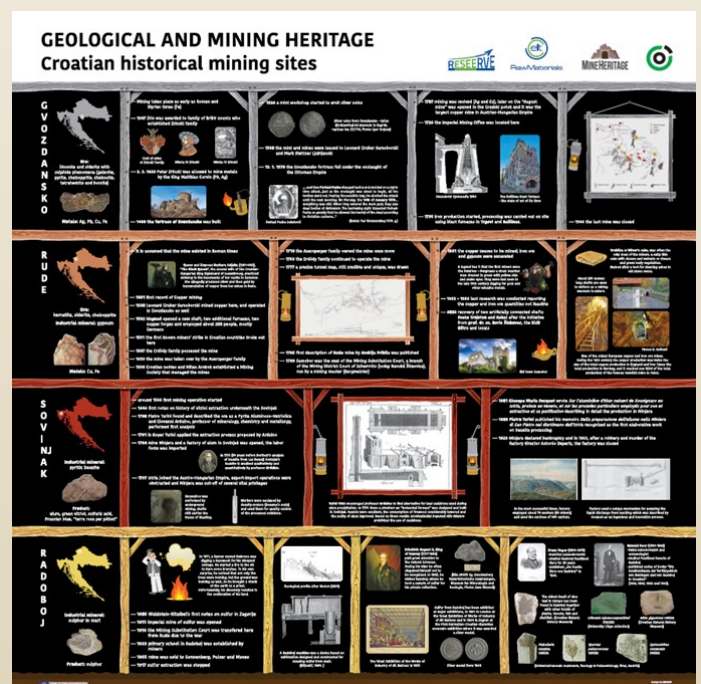


Third MineHeritage Geocache

The Interpretation Centre for the Heritage of Banovina is the third MineHeritage Geocache! Check it out in Banovina region, Croatia or [online](#)

Cool Posters in synergy with rESEErve

In synergy with another KIC project, rESEErve - Mineral potential of the ESEE region, we produced two posters which are now displayed at the corridor of our Department at University of Zagreb – Faculty of Mining, Geology and Petroleum Engineering. Poster about 4 historical mining sites will be displayed permanently in Museum Radoba as well.





WP 3: The first 13 booklets are available

13 booklets with a total of 143 pages present selected MineHeritage sites all over Europe. Explore the sites with booklets. Just click on the booklet to view it.

All booklets

Industrial stroll along the Ourthe
Balade industrielle au fil de l'Ourthe

Mining Museums in the Harz
Bergbaumuseen im Harz

Zabytkowa Kopalnia Srebra Tarnowskie Góry
Historic Silver Mine Tarnowskie Góry

Estonian Mining Museum
Eesti Kaevandusmuuseum
Piusa Caves
Piusa koopad

Outokumpu
Outokumpu Keretti Mine

The Brandes Mine
La mine de Brandes

Marcelo Jorissen Mine
Mina Marcelo Jorissen

Lousal Mine
Mina do Lousal

Tibães Mine
Mina de Tibães

Porto Flavia
Porto Flavia

Argentario Ecomuseum
Ecomuseo Argentario

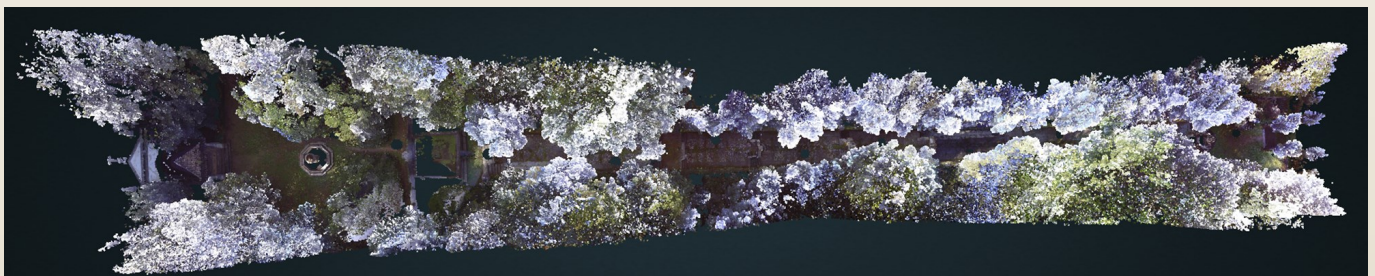
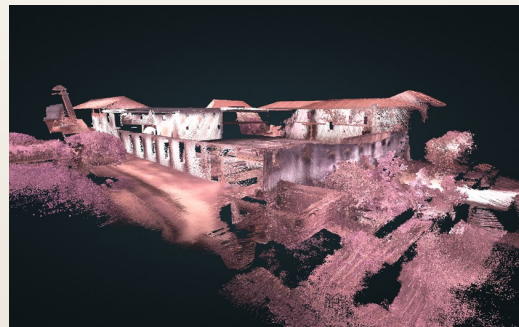
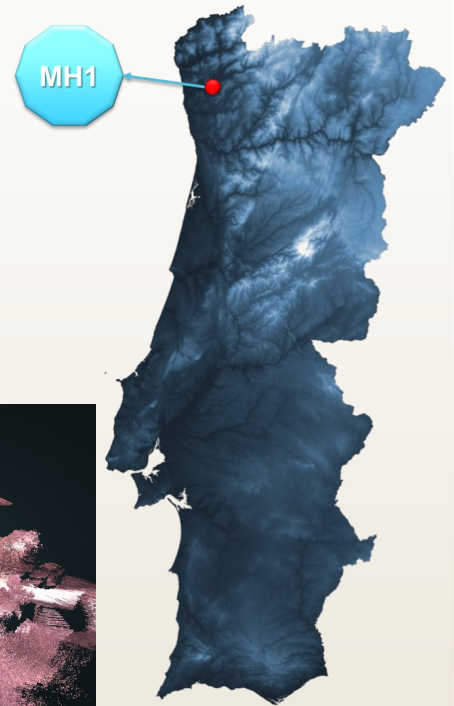
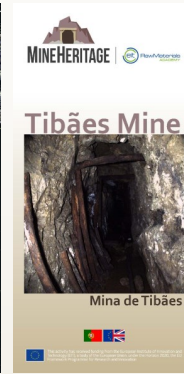
Trgovska gora
Trgovska gora

Starověševských Mine
Baňa Starověševských





WP4: 3D Mapping of Monastery of Tibães is completed



... results will be integrated in the Game

[Video of the making](#)

WP5: Teaser on the Game and App

Can you solve these questions?

Above the ruins of Brandes, when you look towards the mountains, you see a gash in the mountain flank. What is it?

- A – A dry stream
- B – A man-made canal to flush top-soil to uncover the silver-bearing vein
- C – A geological feature
- D – The canal supplying drinking water to Brandes

Where is Porto Flavia located?

- A – Sardinia
- B – Sicily

How long was production time of the Rammelsberg mine?

- A – 33 years
- B – More than 1000 years
- C – 165 years
- D – It was never in production?

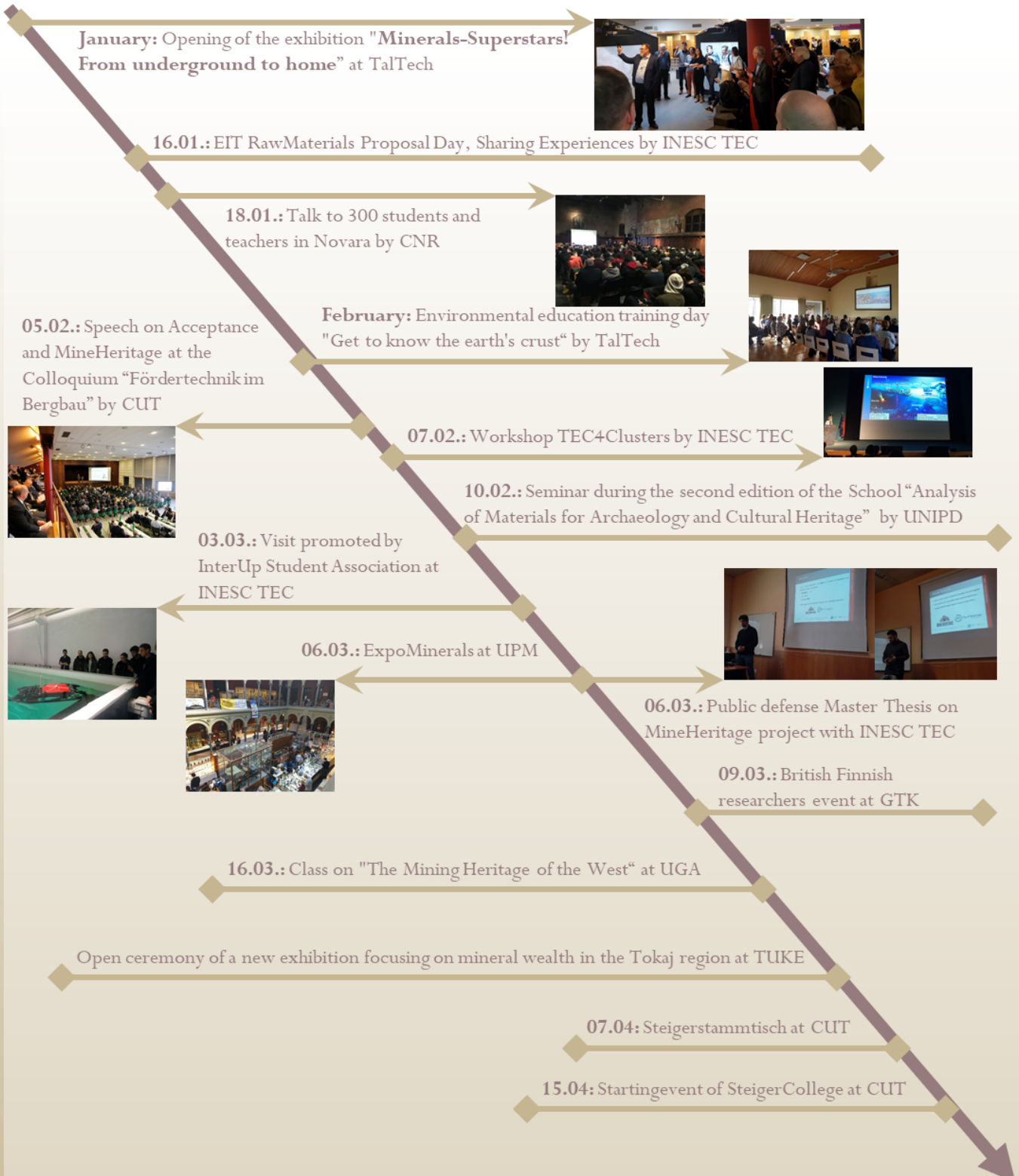
Which element is used for corrosion protection?

- A – Tin
- B – Zinc
- C – Silver
- D – Copper





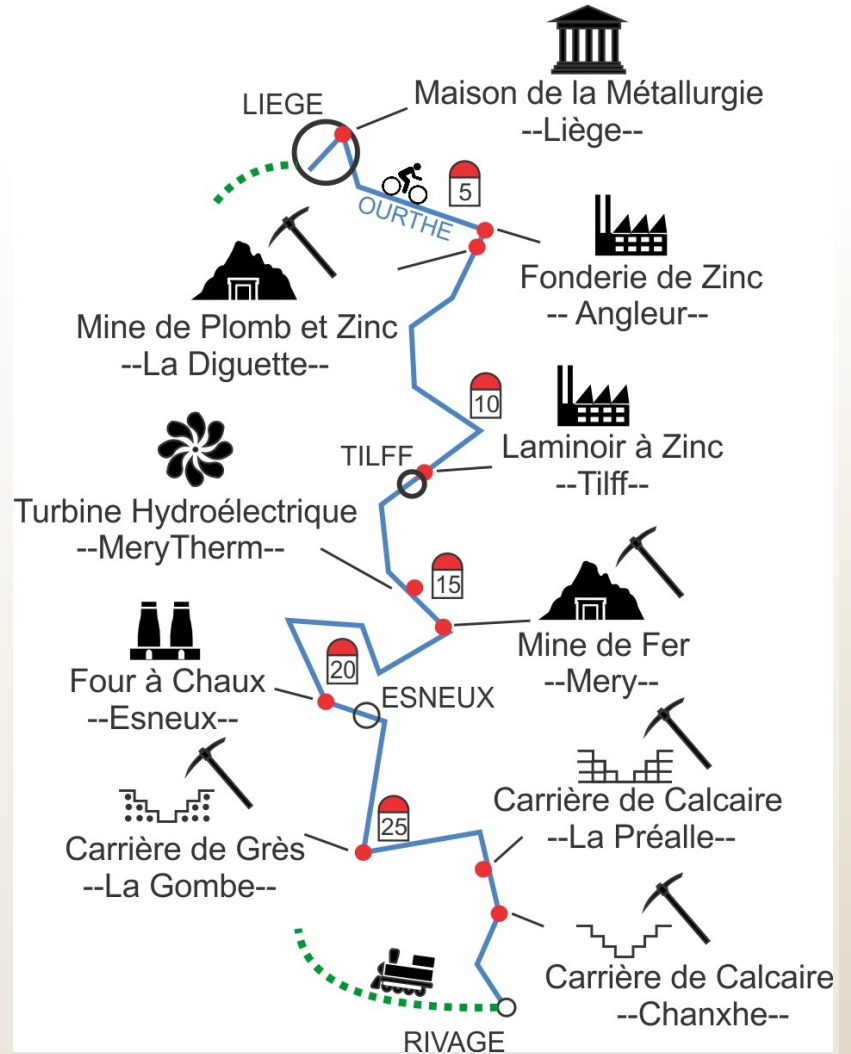
WP 6: MineHeritage @ Dissemination events





MineHeritage footprint in Ourthe Valley

The MineHeritage Route in the Ourthe Valley will be displayed with QR-Codes. The local authorities agreed on the placement of QR-Codes in front of historical MineHeritage sites along the Ourthe Valley in Belgium. These QR-Codes refer to a website where the visitors could find information.



Click for more information:



[www](#)



[Twitter](#)



[Facebook](#)



[LinkedIn](#)



[YouTube](#)

or send an E-Mail to the Coordinator jpv@fct.unl.pt

